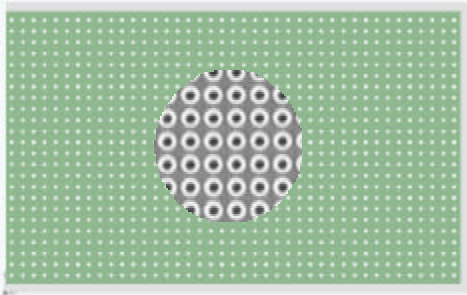
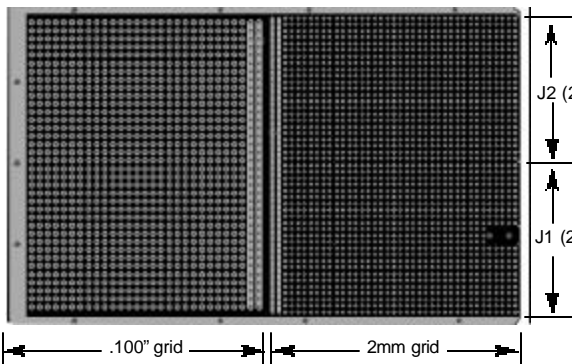


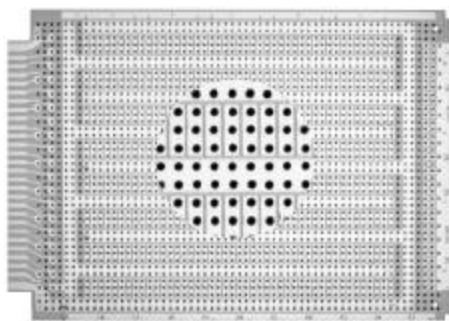
2 mm

**8017**

Circuit Pattern:	Pad per Hole; 2 mm Grid; Pattern Q	•Eurocard size, 100mm x 160mm
Contacts:	160mm (6.30")/.062"	•100 mm height accepts cPCI 2mm J1 (25 row) & J2 (22 row) connectors on edge
Width/Thick:	100mm (3.94")	•Plated thru holes with annular ring
Height:	FR4	•Pads on both sides
Material:	K36	
Solder Terminals:	2mm connector (call factory)	
Wire-Wrap Connector:	.025"+/-0.002 (6mm+/-0.05)	
Hole Diameter:		

Combo: .1" & 2 mm Grid**8018**

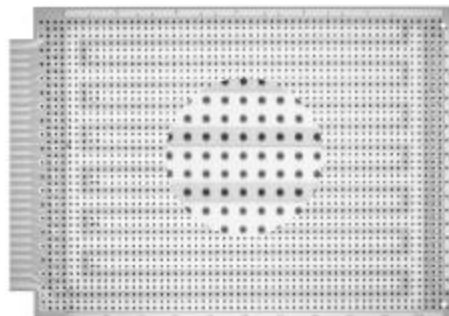
Circuit Pattern:	Pad-Per-Hole; 2mm Grid; Pattern Q & P	•Combination pattern: half 2mm grid; half .1" grid
Contacts:	160mm (6.30")/.062"	•Dual copper rows in middle for Vcc/Gnd use
Width/Thick:	100mm (3.94")	•Eurocard size: 100mm x 160mm
Height:	FR4	•100mm height accepts cPCI 2 mm J1 (25 row) & J2 (22 row) connectors on edge
Material:	FR4	•Plated Thru Holes with annular ring
Solder Terminals:	.025" dia. K36 .042" dia. T42-1, T46 series, T49, T68	•Pads on both sides
Wire-Wrap Connector:	.025"+/-0.002 (6mm+/-0.05)	
Hole Diameter:	.1" grid, .042" dia.	

STD Bus**4610**

Circuit Pattern:	3-Hole Solder Pad
Contacts:	28/56 @ .125" Ctrs Ni/Gold 6.5"/.062"
Width/Thick:	4.5"
Height:	20
16-Pin DIP Capacity:	CEM-1
Material:	T44, T46, T49, T68
V/G Terminals:	R32
Wire-Wrap Socket Pins:	3690-16
Extender:	R656-1
Solder Connector:	CCK 13
Wire-Wrap Connector:	.042"
Rec. Card Cage:	
Hole Diameter:	

STD

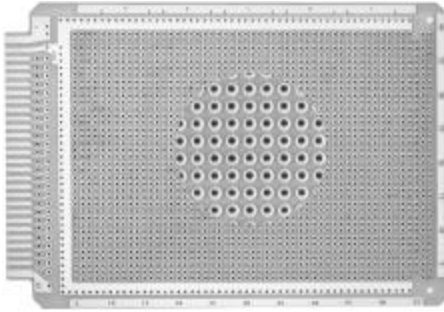
•I/O mounting area for ribbon cable header
•Solder pads on wiring side; component side has contacts only
•Layout paper and instructions included
•Pad and bus surfaces solder-coated for user convenience

**4610-2**

Circuit Pattern:	Interleaved Buses
Contacts:	28/56 @ .125" Ctrs Ni/Gold 9.6"/.062"
Width/Thick:	4.5"
Height:	35
16-Pin DIP Capacity:	CEM-1
Material:	T44, T46, T49, T68
V/G Terminals:	R32
Wire-Wrap Socket Pins:	3690-16
Extender:	R656-1
Solder Connector:	CCK 13
Wire-Wrap Connector:	.042"
Rec. Card Cage:	
Hole Diameter:	

STD

•Power and ground busses on wiring side only; component side has contacts only
•I/O mounting area for ribbon cable connector
•Layout paper and instructions included

**4610-3**

Circuit Pattern:
Contacts:
Width/Thick:
Height:
16-Pin DIP Capacity:
Material:
V/G Terminals:
Wire-Wrap Socket Pins:
Extender:
Solder Connector:
Wire-Wrap Connector: R656
Rec. Card Cage:
Hole Diameter:

STD

Pad-Per-Hole-2 sides
 Grnd plane wiring side
 28/56 @ .125" Ctrs
 Ni/Gold
 6.5"/.062"
 4.5"
 52
 FR4 Epoxy Glass
 T44, T46, T49, T68
 R32
 3690-16
 R656-1
 CCK 13
 .042"

•0.042" plated-thru holes on 0.1" grid
 •Layout paper and instructions included
 •Row and column legends provided

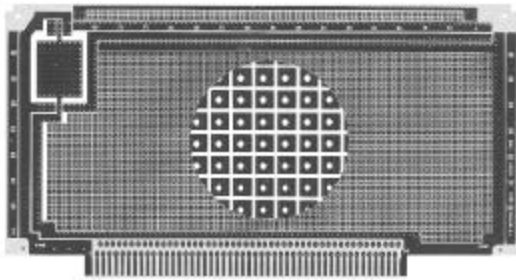
S-100

Image of 8801-6

8801-6 & 8804

Circuit Pattern: 8801-6
8804
Contacts:
Width/Thick:
Height:
16-Pin DIP Capacity:
Material:
V/G Terminals:
Wire-Wrap Socket Pins:
Extender:
Solder Connector:
Wire-Wrap Connector:
Rec. Card Cage:
Hole Diameter:

Pad-Per-Hole
 Voltage/Ground Plane
 50/100 @ .125" Ctrs
 Ni/Gold
 5.3"/.062"
 10.0"
 80
 FR4 Epoxy Glass
 T44, T46, T49, T68
 R32
 3690-16
 R681-3
 R681-2
 CCK 100
 .042"

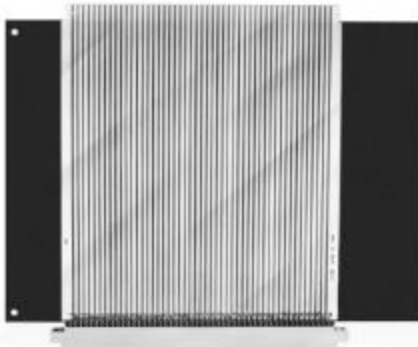
•0.042" plated-thru holes on 0.1" grid
 •I/O mounting area for ribbon cable header
 •Layout paper and instructions included
 •Row and column legends provided

3690-12

Length:
Connector:
Contacts:
Current Rating:
Voltage Rating:
Material:

S-100

7.5" (190.5mm)
 High reliability, gold-plated (mounted)
 50/100
 5 amps at 10° F. rise
 200 RMS or 300 VDC
 FR4 Epoxy Glass, 2 oz. Cu.

Vecto**rbord****3690-34-5V & 3690-34-3V****Card Extender for PCI local bus, Universal tab, 32-bit and 64-bit use.**

Extender card for PCI expansion card uses the "universal" pattern for 32/64 bits in the "short-card" size. The extenders are size and pin compatible for options of both 5.0V and 3.3V versions respectively.

Length:
Contacts:
Height:
Layers:
Legend:
Decoupling Caps:
Mounting Bracket:

6.875" (174.6mm)
 120 Ni/Gold, 0.050" ctrs. (2 x 60 tabs removed in two areas for keying spacing)
 4.2" (106.7mm)
 Four. Power layers may use 3.3V (3690-34-5V) or 5.0 (3690-34-3V)
 Included
 Installed .1mf, 20%
 Included

